
Swift Screen Savers

User's Guide

COSMI Corporation

2600 Homestead Place
Rancho Dominguez, California 90220
voice (310) 886-3510
fax (310) 886-3517

COSMI EUROPE, LTD.

8A Daimler Close
Royal Oak Industrial Estate
Daventry, Northamptonshire NN11 5QJ
United Kingdom
voice +44(0) 1327 876888
fax +44 (0) 1327 879888



SYSTEM REQUIREMENTS

Operating System

Your computer must have Microsoft Windows 95, Microsoft Windows 98, Microsoft Windows NT 4.0, or higher versions of these operating systems.

Disk Space

The amount of disk space required for the use of this program depends upon the number of screen savers you decide to install.

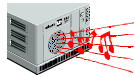
Hardware



A mouse or pointing device is required.



To access our web site you must have a modem and a connection to the Internet.



In order to hear sounds you must have a sound card and speakers.

INSTALLATION INSTRUCTIONS

USING WINDOWS 95, WINDOWS 98, OR WINDOWS NT 4.0

1. Place the CD into your CD-ROM drive.
2. In the start-up screen click on START, then click on RUN.
3. Type in D:\CDSETUP and press Enter. (If your CD-ROM drive is not D, then change it to the letter associated with your CD-ROM drive.)
4. Follow any instructions that appear on the screen.

OUR LINE OF SCREEN SAVERS

COSMI Corporation is proud to present a full line of screen savers.

You are licensed to install one copy of the program and each screen saver on one computer for your own personal use.

SETTING UP A SCREEN SAVER

Installation of Each Saver

Each screen saver is provided in a "package" file. A screen saver must be installed in Windows before it can be used. This is required *once for each individual screen saver*. This is a requirement of Windows.

Each program provides an automated setup for each screen saver.

To select a screen saver to install, run the Screen Saver program. A shortcut for this program is created when you install the CD.

Some screen savers, in addition to individual savers, have a screen saver combining all images. All savers combined include all 200 images. Be warned that installing all 200 images may be extremely slow on machines that have relatively small amounts of memory or slower processor speeds.

To install a screen saver, click on the saver of your choice, and then click on the install button:



Follow the prompts to install the screen saver and make it available for your use.

OTHER OPTIONS

The HELP button activates help (this file).

The ABOUT button shows copyright and version information.

The CLOSE button ends the program and returns to Windows.

SETTINGS

Wallpaper, Security, Display

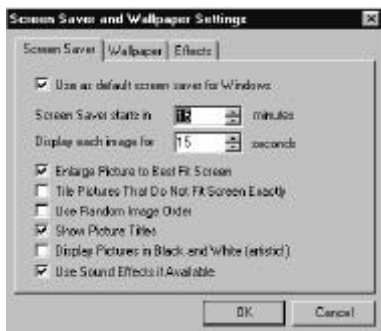
After the screen saver is installed, you will then see the screen saver Options dialog box.

PREVIEW

The Preview Choice shows you the screen saver without waiting for the system to be idle.

SETTINGS

The Screen Saver and Wallpaper Settings is the most important button. You will see the following tabbed notebook:



Screen Saver Page

If you select “Use as default screen saver for Windows,” the saver currently on the screen will become the saver activated when you are idle. You may customize when the saver starts and how long each image will be shown.

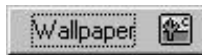
The other advanced settings on the Screen Saver page include:

- Enlarge Picture to Best Fit Screen (not recommended; images are already optimized for VGA).
- Tile Pictures (not recommended).
- Use Random Image Order (matter of personal taste).
- Show Picture Titles (not recommended).
- Display Pictures in Black and White (not recommended).
- Use Sound Effects (matter of personal taste).

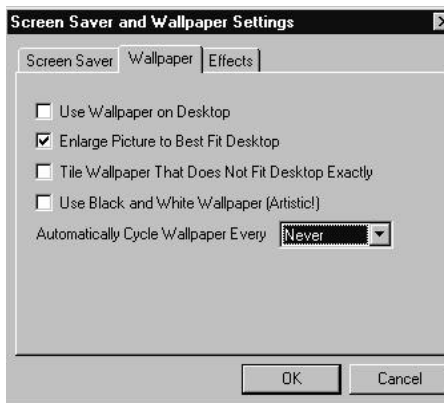
Wallpaper Page

Wallpaper is the image that is displayed on your desktop. You may switch between several different wallpaper types.

To use an image as wallpaper, highlight the image and then click on the Wallpaper button:



The program will automatically set the current image as your wallpaper.



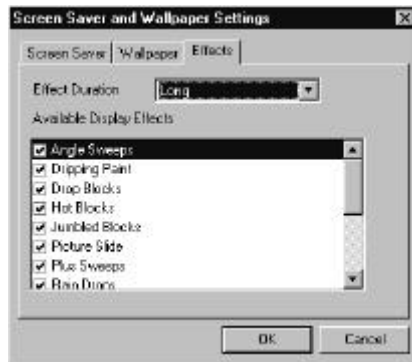
The other advanced settings on the Wallpaper Page include:

- Use Wallpaper on Desktop (matter of personal taste).
- Enlarge Picture to Best Fit Desktop (not recommended).

- Tile Wallpaper That Does Not Fit Desktop Exactly (not recommended).
- Use Black and White Wallpaper (matter of personal taste).
- Automatically Cycle Wallpaper (matter of personal taste).

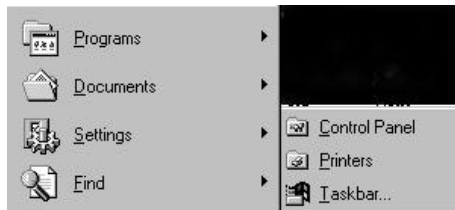
Effects Page

The Effects Page allows you to select which effects will be used between images. These effects should be selected as you see fit.



Changing Savers

After you have installed a screen saver ONCE, you may select it or change to no saver, or to any other screen saver. This is done through the Windows Control Panel:



To reach the Control Panel, click on the Start button and select Settings, then Control Panel. Now select the DISPLAY icon:



You may then manage your screen savers from the Screen Saver tab. The settings that you used when you installed a saver are recognized by Windows. You may change the settings as you see fit.

For more information on the settings, please consult Windows help.

BONUS PROGRAMS

During installation of each screen saver you will see a "read me" file which describes the bonus programs that you have received on your disk. Manuals for these programs are included on line and as pdf files.

FREE SCREEN SAVER OF THE MONTH CLUB

Congratulations! As the owner of this screen saver, you're automatically a member of the Swift Screen Saver of the Month Club! When you register your program at www.cosmi.com, we'll activate you as a member. You will be able to go to our web site on the last day of each month and get a new free screen saver. Membership is FREE. You will need this password to enter the download area for the Screen Saver of the Month Club:

Ferrari

The download page for the free screen savers is at the clubhouse:

www.cosmi.com/club/saverclub.htm

We hope to see you every month in the clubhouse!

VISIT US ON THE WEB

Our web site, www.cosmi.com has fun features and freebies. Stop by and visit!

ACKNOWLEDGMENTS

Photo Credits

Some images were obtained from the following: ArtToday and Corel.

Each image is copyright of its respective creators/holders and are not affiliated with or endorsed by any persons or places depicted herein.

Special Thanks

Team COSMI, the only fully integrated software developer and publisher in the budget software industry, wishes to give special thanks to Team COSMI members who made special contributions to this program:

Programming: Amy Seeberger, Science South, Inc.

Packaging: Susan Randle and David Serrano

Testing and In-house Programming: John Passo, Brian Snofsky, Emerald Burke, Carol Dunn, Georgia Schubert, Cesar Garcia

Documentation Manager: Kathryn Berlfein

SUPPORT

We encourage all of our users to provide comments and suggestions about this program. This program is supported by voice, fax and Internet e-mail.

Voice



HOTLINE (310) 886-3510

For telephone support, call COSMI's Customer Service during the hours below.
(Note: All times are in the Pacific Standard Time zone.)

Monday through Thursday, 8:30 am - 12:00 noon and 1:00 pm - 4:00 pm

Friday, 8:30 am – 12:00 noon.

☒ COSMI is very proud to be one of the few remaining software publishers to provide no charge customer support!

E-mail and Fax

Support questions may be addressed to: support@cosmi.com.

You may fax us at (310) 886-3517.

Internet

Be sure to visit COSMI's Internet Web site: <http://www.cosmi.com>.

WARRANTY

COSMI makes no warranty of any kind, express or implied, including without limitation any warranties of merchantability and/or fitness for a particular purpose. COSMI shall not be liable for any damages, whether direct, indirect, special or consequential arising from a failure of this program to operate in the manner desired by the user. COSMI shall not be liable for any damage to data or property that may be caused directly or indirectly by use of this program.

The disk on which this software is recorded will be replaced within 90 days of purchase if found to be defective in material or workmanship. This shall constitute the sole remedy of purchaser and the sole liability of COSMI Corporation.

IN NO EVENT WILL COSMI BE LIABLE FOR ANY DAMAGES, INCLUDING ANY LOST PROFITS, LOST SAVINGS OR OTHER INCIDENTAL OR CONSEQUENTIAL DAMAGES ARISING OUT OF YOUR USE OR INABILITY TO USE THE PROGRAM, OR FOR ANY CLAIM BY ANY OTHER PARTY.

The License Agreement and Warranty shall be construed, interpreted and governed by the laws of the state of California.

COSMI CORPORATION
2600 Homestead Place
Rancho Dominguez, CA 90220
voice (310) 886-3510
fax (310) 886-3517

COSMI EUROPE, LTD.
8A Daimler Close
Royal Oak Industrial Estate
Daventry, Northamptonshire
NN11 5QJ, United Kingdom
voice +44(0) 1327 876888
fax +44 (0) 1327 879888

E-mail: support@cosmi.com

Internet Web site: <http://www.cosmi.com>

000120
ROM-SSM